

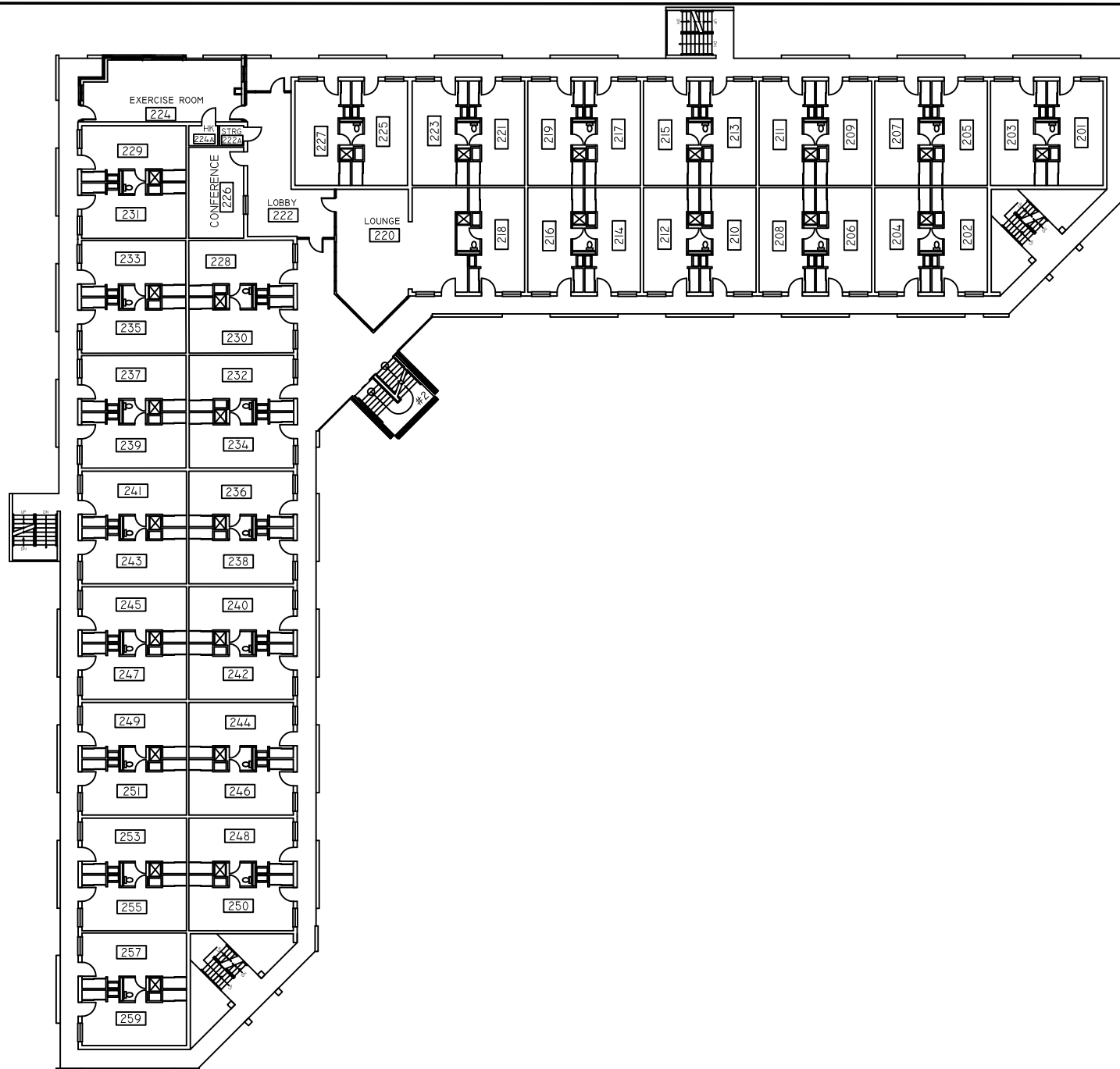
- Water Bottle Refill Station
- Standard Water Fountain

DWG. NO.:	REVISION DATE:
<b>A-1</b>	<b>08-22-2018</b>
BLDG. CODE:	SCALE:
<b>SM</b>	<b>NTS</b>
	DESIGN BY:
	<b>PLA</b>
	CHECKED BY:
	<b>JCD</b>

**RECORD FLOOR PLAN  
ST. MARTIN HALL**

**FIRST FLOOR PLAN**

**SALISBURY UNIVERSITY**  
 FACILITIES PLANNING & CAPITAL PROJECTS  
 ARCHITECTURAL AND ENGINEERING SERVICES  
 1101 CAMDEN AVENUE  
 SALISBURY, MARYLAND 21801  
 410 - 543 - 6215

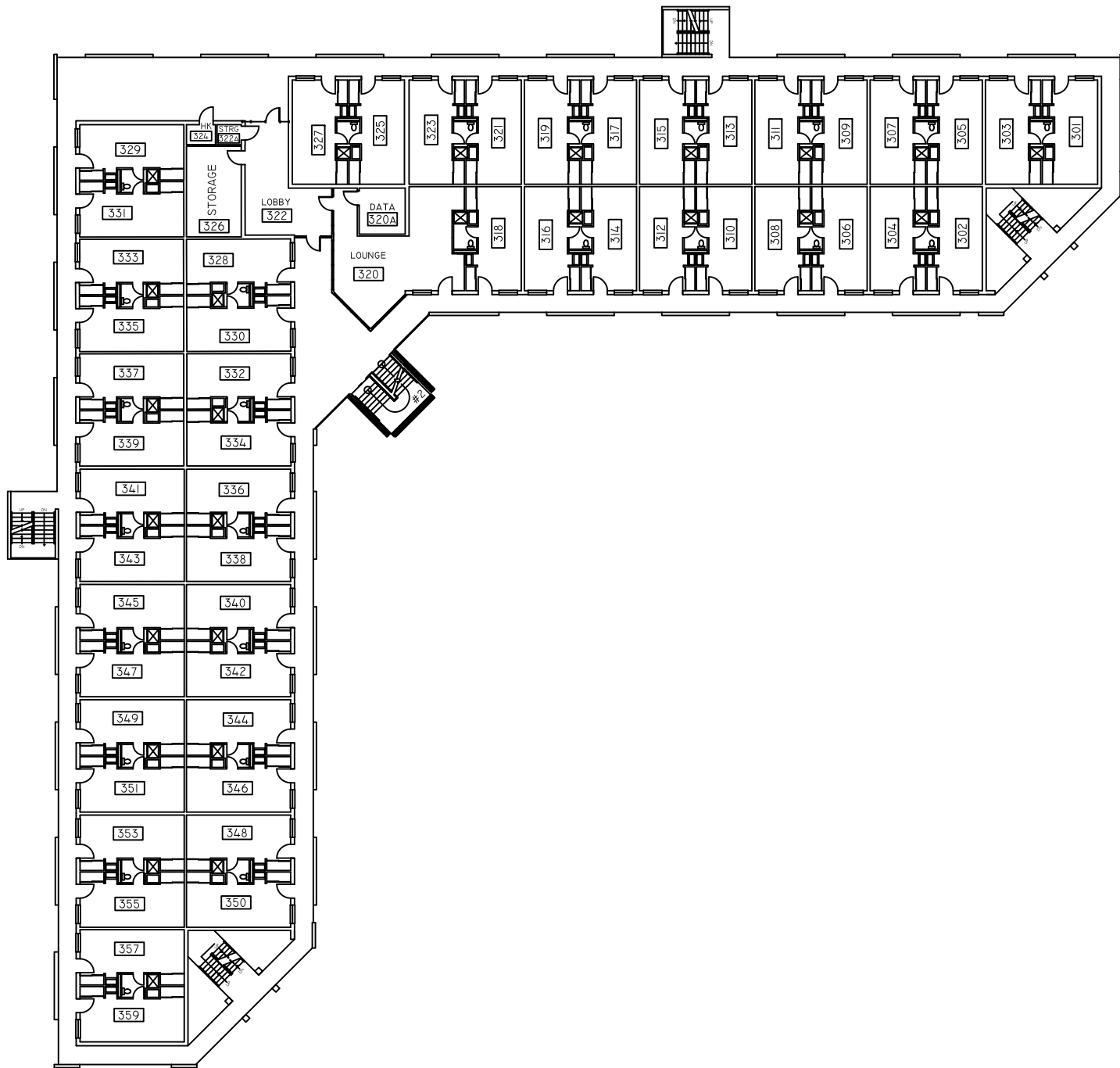


DWG. NO.:	REVISION DATE:
<b>A-2</b>	<b>08-22-2018</b>
	SCALE: <b>NTS</b>
BLDG. CODE:	DESIGN BY: <b>PLA</b>
<b>SM</b>	CHECKED BY: <b>JCD</b>

**RECORD FLOOR PLAN  
ST. MARTIN HALL**

**SECOND FLOOR PLAN**

**SALISBURY UNIVERSITY**  
 FACILITIES PLANNING & CAPITAL PROJECTS  
 ARCHITECTURAL AND ENGINEERING SERVICES  
 1101 CAMDEN AVENUE  
 SALISBURY, MARYLAND 21801  
 410 - 543 - 6215



DWG. NO.:	REVISION DATE:
<b>A-3</b>	08-22-2018
BLDG. CODE:	SCALE:
<b>SM</b>	NTS
	DESIGN BY:
	PLA
	CHECKED BY:
	JCD

**RECORD FLOOR PLAN  
ST. MARTIN HALL**

**THIRD FLOOR PLAN**

**SALISBURY UNIVERSITY**  
 FACILITIES PLANNING & CAPITAL PROJECTS  
 ARCHITECTURAL AND ENGINEERING SERVICES  
 1101 CAMDEN AVENUE  
 SALISBURY, MARYLAND 21801  
 410 - 543 - 6215